

Getting  
Started  
with  
Visual Access



## A.2. Creation of keys for page changes or to have access to special functions.

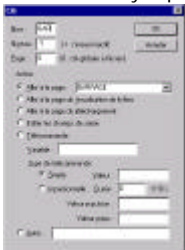
Most of the screens have a predefined input field you can suppress it by ticking 'No input field' in the page properties), this input field allows you to enter key words that are recognized by Visual Access. These key words can have different ranges, you can define global keys that are accessible from all the pages (Display the 'Properties of the terminal server' box, then click on 'Global keys') or you can define them in the screen configuration (Display the properties box of the terminal screens by double-clicking in the screen or by choosing the 'Properties...' menu, then chose the 'keys' tab).



First, enter the name in the key edition box. This name is the one recognized by Visual Access. You can then chose a page and a user level so as to only authorize certain persons to have access to the key. If your screen contains several pages, you can authorize the access to the key only in one special page. Then chose the action that this key allows, you can either change the screen by selecting a screen in the drop-down list, go to the predefined screen (visualization of files or loading), enter in edition mode so as to modify the values in the editable input fields or execute a remote control (change the value of a variable in a simple or impulsive way).

## C) Creation or modification of animated synoptics

The list of synoptics already present in the project is displayed in the directory of the project under the 'Web' icon in the 'synoptics' directory. To add a synoptics, chose the 'New synoptics' command in the contextual menu of the 'Web' icon or chose the 'File' menu, 'New' then 'Synoptics'.



A second directory can be found under the 'Web' icon, it deals with 'HTML Pages'; this directory contains the whole HTML pages present in the project directory. When you save a synoptics, Visual Access editor can automatically generate an HTML page that contains a JAVA applet so as to be able to display the corresponding synoptics. To activate or deactivate this option, chose the 'Options' menu, then 'Options...'.

When you double-click on an HTML page, the HTML pages editor defined under Windows is launched (if you have one installed on your pc). If you modify an HTML page which is associated to a synoptics, this one is not overwritten when you resave the synoptics. Only the JAVA applet parameters are updated.

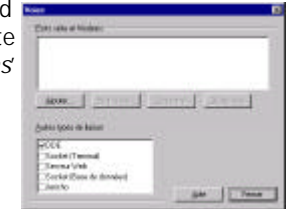
Once you have defined some synoptics, you can generate a home page containing an index positioning on the pages you have chosen.

# Configuration of the Communication Links

Visual Access can manage one or several modems. Each modem must be connected on one of the available serial ports. If the modem is a compatible one, it can be directly managed by Visual Access ; It is not necessary to install it under Windows. If Visual Access is used with Alert, you can share the modems and communication ports.

## A) Sharing of the modems and communication ports with ALERT software

If you use Visual Access with Alert and share one or several modems or communication ports, you must, on the one hand, configure these modems and ports in Alert (see Alert guide ), and on the other hand, activate the DDE communication links in Visual Access ('Options' Menu , 'Links...').



## B) Configuration of the modems and communication ports

Chose the 'Options' Menu, then 'Links...' or double click on the main window. The different means of communication used by Visual Access are displayed in the dialog box that appears. To add a modem or a communication port, click on the 'Add...' button.

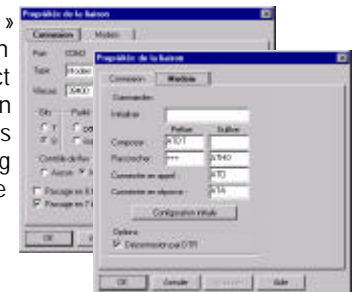
### B.1. Modems managed by Windows

If the modem has been installed under Windows, it can be selected in the «TAPI lines» list. Select one or several modems, they will be added in Visual Access when you click on 'OK'.



### B.2. Modem directly managed by VISUAL ACCESS

Select one or several ports in the « communication ports » list, they will be added in Visual Access when you click on 'OK'. You can then configure them in the 'Links...' box. Select the port you want to configure and then click on 'Properties...' or double-click on the list. A dialog box appears in which you can configure the whole parameters concerning the communication port (speed, parity, format...) and the modem (initialization chain...).



## C) Configuration of the distant access server

To use Visual Access as distant access server, chose the 'Tools' Menu, then 'Project Options', then click on the 'Protocol' tab.

In the dialog box, check in the 'Allowed Identifications' list that the 'PPP' box is well ticked. To modify options, double-click on the 'PPP' line or click on the 'Configuration...' button.

## D) Configuration of the Web server

To use Visual Access as Web server, that is to say if you want to be able to consult HTML pages or animated synoptics from a local or remote Web browser, you must activate the corresponding communication links. To do so, open the 'Voice...' dialog box (In the 'Options...' Menu, 'Voices...' or double-click on the main window) then tick the 'Web Server' and 'Database (VADB)' boxes in the 'Other link types' list. The 'Database (VADB)' link type allows the JAVA applets used to display the animated synoptics to be connected to Visual Access in order to dynamically retrieve the value of the variables used in the synoptics. To modify the configuration of the web server (Home page...), use the project editor (see 'Use of the project editor' hereafter).

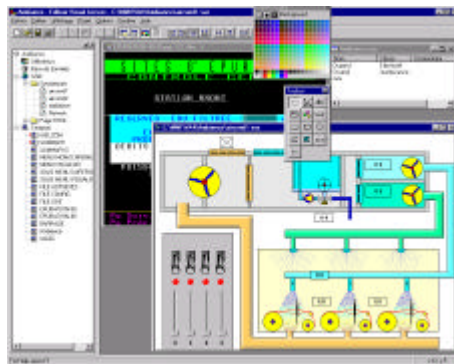
## Use of the project editor

To modify a project (ANSI screen, HTML pages, animated synoptics, database, users...), launch Visual Access project editor either from the « start » button of Windows choosing the 'Micromedia' program group or from Visual Access application by choosing the 'Tools' menu then 'Edit the project...'.

### A) User Identification

The access control to Visual Access is available either by choosing an internal user database or through an external application as Alert. So doing you avoid double user configuration that may be necessary in some cases. To have access to the user control options, select the 'Users' icon then chose 'Properties...' in the contextual Menu or in the 'Display' Menu.

The user file is used to control the access to Visual Access at dif-



ferent levels :

- For the remote access server, according to the options configured in Visual Access (see « Configuration of the remote access server »)
- For the web server, according to the options configured in Visual Access (see « Configuration of the web server »)
- For the terminal server (ANSI) according to the terminal server (select the 'Terminal' icon then chose 'Properties...' in the contextual menu or in the 'Display' menu). If the type of project is 'simple' the access control previously defined is used. If it is of 'Alert' type for instance, the identification of names and passwords is done by Alert.

If you chose to use Visual Access user management, you can configure the user list by double clicking on the 'Users' icon in the « project » directory. If your project does not contain user file, you will be suggested to create one.



### B) Creation or modification of ANSI/Web pages

The list of the ANSI screens present in the project is displayed in the project directory under the 'Terminal' icon. If you want to add a screen, chose the « New screen » command in the 'Terminal' contextual menu of the icon or chose the 'File' menu, 'New', then 'Terminal Page'.

#### A.1. Addition of statistical elements on a screen

Use the 'Text' tool of the tool box to write text. You can chose the attributes (colors for the 40 column pages, underlined, inversed, blinking...) at the bottom of the toolbox. To draw lines using small boxes, click on or

You can copy the attributes placed anywhere on the screen thanks to the pipette

To select a zone of static elements, use the 'Text' tool. Once you have selected the zone, you can move it with your mouse or copy it by pressing at the same time on the CTRL key. You can also suppress it, copy it or cut it.

#### A.2. Addition of dynamic elements on a screen

Chose the 'Variable' tool to display the content of a variable defined in the database. To display the properties of this element, double click on this element or chose 'Properties...' in the menu. In this dialog box, enter the name of the variable you want to display or directly select it in the database by clicking on

If you directly enter a DDE reference which does not already exist in the database, this one will automatically be created when you use it. Then chose the way you want Visual Access to read this variable: either 'Initial reading' (The variable will only be read when displaying), or 'Continuous update' (the variable is displayed in real time). If you want to modify the value of this variable, tick the 'Authorized writing' box. You can thus chose a 'Conversion rule' to convert the value of a variable and a 'Numeric format' to modify the appearance of this value.

